

## SnapXit S40A Standard

### Appearance and Composition

Model/Part No:	S40A
Body:	Black Anodised Aluminium
Plunger:	Red Anodised Aluminium
Safety:	Plastic break-away security strip
Cir-clip:	Stainless steel
Impact Tip:	Tungsten alloy
Size:	39mm x 24mm
Weight:	65g
Tape:	3M VHB 4936 Conformable Foam Tape
Applications:	Standard duty toughened glass emergency exit device

### Production Certification

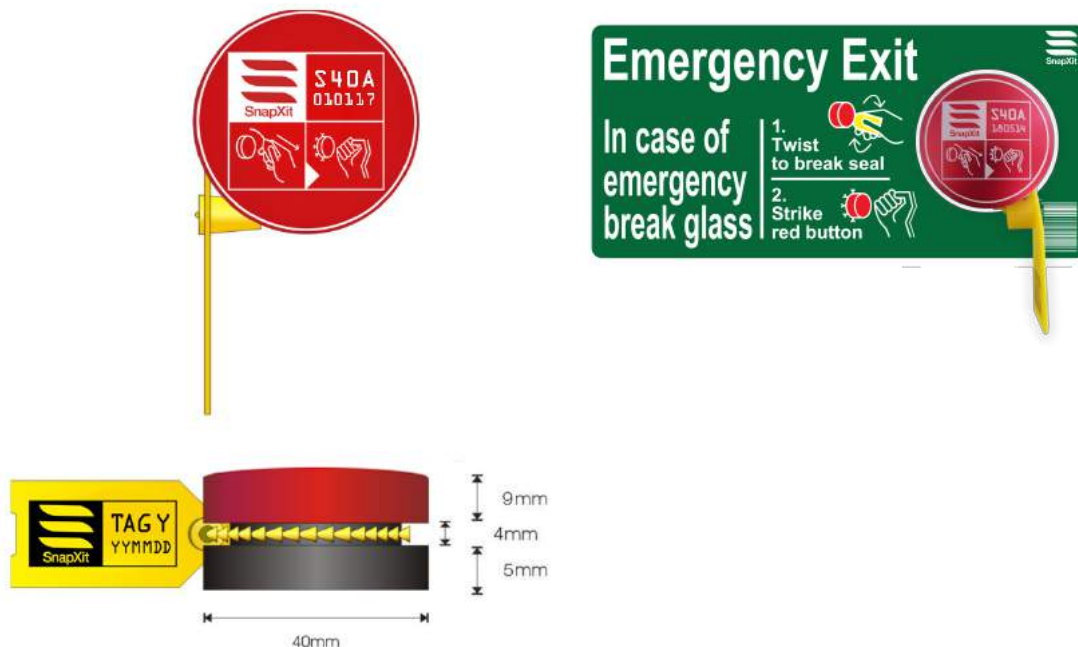
ISO9001:2015

RoHS 2011/65/EU  
IEC 62321:2008  
EN 14672:2004  
EPA 3540C:1996

RoHS 2011/65/EU  
REACH 2015/863/EU

### Sectors and Usage

The S40 devices are used most often in Buses, Light Rail, Taxi's and converted-van Minibuses. As ingress and egress devices on Heavy Industrial vehicles and other single-occupancy static or mobile industrial machinery. They are also used on fire extinguisher covers and roof hatches.



### Performance Data

4mm BS 857 Toughened Glass			
N	Min strikes (x/10)	Max strikes (x/10)	Average (%)
80	1 (9/10)	2 (1/10)	90
90	1 (10/10)	-	100
100	1 (10/10)	-	100

Results may vary due to the relative toughness and hardness in tempered safety glass, please be sure the glass is fit for purpose and verified for use with these devices.

**USE ONLY ON CLEARLY MARKED AND PROPERLY TOUGHENED GLASS**