



C40S

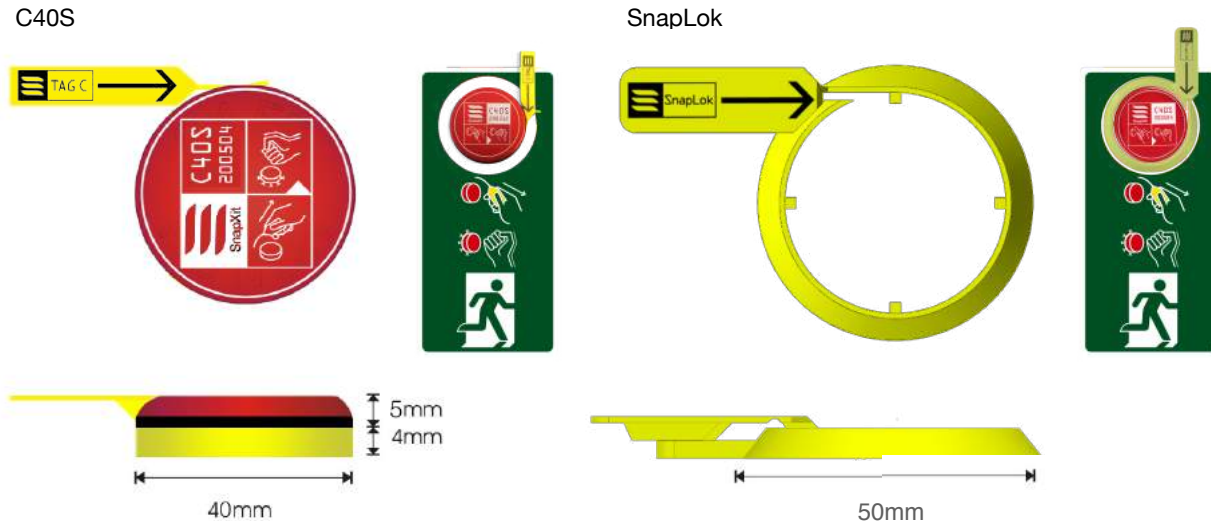
Appearance and Composition

Part Number: C40S and C40SL
 Strike Plate: Red anodised aluminium.
 Base Plate: Black anodised aluminium.
 Safety: C40S SnapTag break-away, replaceable, yellow polypropylene.
 C40SL SnapLok break-away, replaceable, yellow photo-luminous polypropylene.
 Impact Tip: Tungsten Carbide
 Size: C40S - 40mm Ø x 9mm
 C40SL - 50mm Ø x 9mm
 Weight: C40S - 45g
 C40SL - 51g
 Suspension: High strength closed cell Neoprene.
 Adhesive: 3M 9448 VHB industrial foam tape

Sectors and Usage

The C40 devices are used most often in Buses, Light Rail, Taxi's and converted-van Minibuses. Tested successfully but not independently on 8mm toughened glass for use in commercial marine and architectural applications. They are also used on toughened glass fire extinguisher covers and roof hatches.

C40S



Performance Data (C40S)

N	4mm BS 857 Toughened Glass			5mm BS 857 Toughened Glass		
	Max Strikes	Min Strikes	% First Strike	Max Strikes	Min Strikes	% First Strike
60	2	1	57% (of 10)	2	1	28.5% (of 10)
70	2	1	85% (of 10)	2	1	71.5% (of 10)
80	1	1	100% (of 10)	1	1	100% (of 10)

Results may vary due to the relative toughness and hardness in tempered glass, please be sure the glass is fit for purpose and verified for use with these devices.

Luminance Decay (SnapLok)

Time[H:M:S]	0:00:01	0:00:05	0:00:10	0:01:00	0:05:00	0:10:00	0:20:00
Intensity[mcd/m ²]	2000	15000	5250	1210	535	128	60
Time[H:M:S]	0:30:00	0:40:00	0:50:00	1:00:00			
Intensity[mcd/m ²]	31	23	15	9			

NB. USE ONLY ON CLEARLY MARKED PROPERLY TOUGHENED GLASS